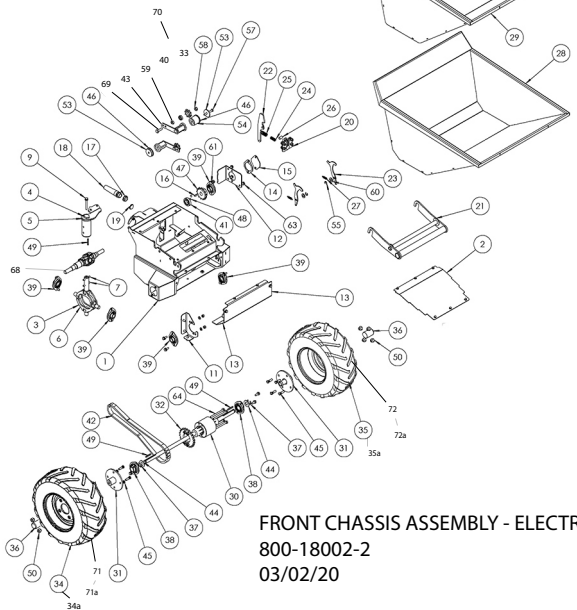


# FRONT CHASSIS ASSEMBLY ELECTRIC



FRONT CHASSIS ASSEMBLY - ELECTRIC  
800-18002-2  
03/02/20

## FRONT CHASSIS - PARTS LIST ELECTRIC

	PART NUMBER	DESCRIPTION	QTY	NOTES
1	101-03300	CHASSIS FRONT WA	1	
2	101-99908	PRESSING MIDDLE COVER	1	SERIAL NO UP TO B202299
3	101-04100	GIMBLE WA KEYED	1	
4	101-04000	CENTRE STEERING PIVOT WA KEYED	1	
5	101-00500	CENTRE STEERING PIVOT WA	1	SERIAL NO UP TO B151049
6	101-00100	GIMBLE WA 3/4"	1	SERIAL NO UP TO B151049
7	3-0093	PIN SPIROL 8 X 50 LONG	2	SERIAL NO UP TO B151049
9	7-8061	SCREW SET M8 X 70mm (PLAIN)	1	
11	102-99921	PRESSING BEARING FRONT	1	
12	101-99961	COVER BEARING FRONT	1	
13	102-99948	PRESSING FRONT COVER	1	
14	101-99943	SPACER BEARING COVER	1	
15	101-99942	PLATE BEARING COVER	1	
16	21-1600	KEY 6X6X25	1	
17	70-5011	NUT 25mm BULK HD	1	
18	70-5030	CABLE GLAND	1	
19	72-1000	BLANKING PLUG 25MM	1	
20	101-01200	SKIP CATCH BRACKET WA	1	
21	101-02100	FRAME SKIP CARRIER W.A	1	
22	101-02901	PLATE SKIP CATCH	1	
23	101-99929	PRESSING TIP RETAINER	2	
24	2-1012	SPRING INNER	1	
25	2-1013	SPRING OUTER	1	
26	3-0091	PIN LATCH PIVOT	1	
27	2-1007	SPRING EXT (RETAINER CATCH)	2	
28	100-00500SP	SKIP 300 W.A. (LIME GREEN)	1	BENDI 300
28	100-00500YSP	SKIP 300 W.A. (YELLOW)	1	BENDI 300
28	100-00500ORSP	SKIP 300 W.A. (ORANGE)	1	BENDI 300
29	100-01100SP	SKIP 450 W.A. (LIME GREEN)	1	BENDI 450
29	100-01100YSP	SKIP 450 W.A. (YELLOW)	1	BENDI 450
29	100-01100ORSP	SKIP 450 W.A. (ORANGE)	1	BENDI 450
30	6-1200	DIFFERENTIAL AXLE FRONT	1	
31	102-03100	HUB W.A.	2	
32	104-99925	GEAR 22T PCD111.55	1	
33	104-99926	COG 8T 41.48PCD	2	UP TO B181628, THEN USE ITEM 80
34	60-6509RHF	WHEEL ASSY 16X6.5X8	1	BENDI 300, UP TO B202299
35	60-6509LHF	WHEEL ASSY 16X6.50X8	1	BENDI 450, UP TO B202299
36	72-0400	MOULDING HUB COVER	2	
37	3-1061	CLIP E- 3/4" SHAFT	2	
38	53-0110	BEARING BALL 25 bore mounted	2	
39	53-0120	BEARING BALL 19.05 bore mounted	5	
34a	60-6509LHF	WHEEL ASSY 16X6.5X8	1	BENDI 300, UP TO B202299
35a	60-6509RHF	WHEEL ASSY 16X6.50X8	1	BENDI 450, UP TO B202299
40	53-0130	BEARING BALL 26x10x8	2	UP TO B181628, THEN USE ITEM 80
41	53-0170	BEARING BALL 25x47x12	1	
42	21-2100	CHAIN 5/8" FRONT	1	
43	2-1001	TENSIONER ASSEMBLY	2	

## FRONT CHASSIS - ELECTRIC Cont'd

44	4-9021	WASHER 3/4" ID X 38 x 2.0	2	
45	7-10050	WHEEL STUD 3/8"X24UNF	8	
46	4-9031	WASHER 50X8.5X1.5 BZP	6	
47	21-1500	COG 13T	1	
48	7-6031	SCREW GRUB M6 X 12	2	
49	21-1200	KEY 3/16"SQ X 40mm	3	
50	8-3800	WHEEL NUT - 3/8" UNF	8	
53	102-99940	BOSS TENSIONER SUPPORT	2	
54	104-99913	BOSS TENSIONER SPACER	1	
55	3-1050	CLIP-E	2	
57	7-8088	BOLT M8 X 60 HEX BZP	1	
59	8-10002	NUT M10 BZP THIN	2	
60	4-1204	WASHER M12 FORM A BZP	2	
61	9-8067	BOLT M8 X 25 COACH	2	
62	8-8008	NUT M8 NYLOC BZP	6	
63	7-8080	BOLT M8 X 20 HEX BZP	24	
68	21-0650	DRIVESHAFT ASSY	1	
69	9-10007	M10 X50 BOLT	2	
70	104-99926SP	COG / SLIPPER KIT	2	SERIAL NO FROM B181629
71	60-6609RHF	WHEEL ASSY 16X6.5X8	1	BENDI 300, FROM B202300
72	60-6609LHF	WHEEL ASSY 16X6.50X8	1	BENDI 300, FROM B202300
71a	60-6609LHF	WHEEL ASSY 16X6.5X8	1	BENDI 450, FROM B202300
72a	60-6609RHF	WHEEL ASSY 16X6.50X8	1	BENDI 450, FROM B202300
73	101-99986	PRESSING MIDDLE COVER UNIVERSAL	1	SERIAL NO FROM B202300